

Threaded Narratives:

50 Years of Women Artists at ATW

Over the past 50 years, ATW has worked with many of Australia's most significant artists to translate their practices into tapestry. This exhibition exclusively features women artists, celebrating their contributions to Australian art.

Threaded Narratives examines how their practices, spanning modernist figuration and abstraction to First Nations narrative painting, conceptual installation, and contemporary drawing, have been reinterpreted in tapestry. Displayed alongside developmental samples, these works reveal tapestry as a site of experimentation, where ideas are reimaged through material, scale, and technique, and celebrate ATW's contribution to Australian art history.

Daisy Andrews

Atong Atem

Irene Barberis

Anmanari Brown

Maree Clarke & Mitch Mahoney

Marie Cook

Polly Courtin

Lee Darroch

Lesley Dumbrell

Merrill Dumbrell

Janenne Eaton

Merrin Eirth

Emily Floyd

Rae Ganim

Naomi Hobson

Kaiadilt Artists from Bentinck Island

Jenny Kee

Janet Laurence

Eugenia Lim

Sara Lindsay

Mary MacQueen

Helen Maudsley

Pantjiti Mary McLean

Mirka Mora

Nanyuma Napangati

Mandy Nicholson

Faye Plamka

Ema Shin

Sally Smart

Margaret Stones

TextaQueen

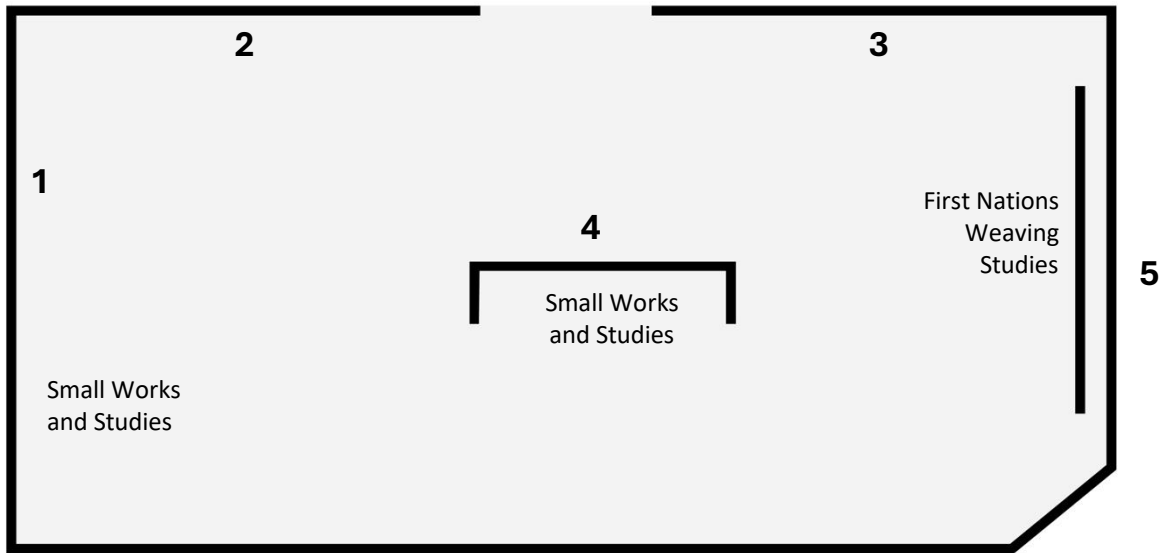
Judy Watson

Nyankulya Watson

Sheena Wilfred

Ruby Williamson





Large Works

- | | |
|--|---|
| <p>1 Lesley Dumbrell <i>Snakes and Ladders, 1979</i> Wool, Cotton, Linen, Silk, Lurex & Rayon 181 cm x 235 cm Woven by Sara Lindsay, Merrill Dumbrell, Cresside Collette and Alan Holland Tapestry Foundation Australia Collection, NFS</p> | <p>4 Janet Laurence <i>Listen, to the Sound of Plants, 2017</i> Wool and cotton 120 cm x 240 cm Woven by Chris Cochius, Pamela Joyce, Cheryl Thornton Private Collection, NFS</p> |
| <p>2 Sheena Wilfred <i>Bush Foods, 2015</i> Wool and cotton 184 x 215 cm Woven by Chris Cochius, Pamela Joyce and Cheryl Thornton Private Collection, NFS</p> | <p>5 Merrin Eirth <i>Black tomato's fleshy Heart, 2003</i> Wool and cotton 178 x 123 cm Woven by Merrill Dumbrell \$9,500</p> |
| <p>3 Panjiti Mary McLean <i>Painting at Kalkutjara, 1998</i> Wool and cotton 275 cm x 204 cm Woven by Irene Creedon \$40,000</p> | |

First Nations Weaving Studies

Explorative studies for a range of works, including major public commissions, developed in collaboration with First Nations artists. These explorative samples form part of the early stages of the weaving process, including those developed for significant public display, in sites such as the Melbourne Recital Centre, the New Footscray Hospital, and Melbourne Town Hall. Also included are works from the Embassy Collection, currently on display in Australian embassies in London, Rome, Tokyo, and Jakarta.



6 - 8 | Kaiadilt Artists from Bentinck Island (Rayarriwarrtharrbayingathi Mingungurra Amy Loogatha, Wirngajingathi Bijarrb Kurdalalngk Dawn Naranatiil, Thunduyingathi Bijarrb May Moodoonuthi, Warthadangathi Bijarrba Ethel Thomas, Mirdidingkingathi Juwarnda Sally Gabori, Birmuyingathi Maali Netta Loogatha, Kuruwarriyingathi Bijarrb Paula Paul)

Explorative Studies - *Dulka Warngiid (Land of All)*, 2008

Wool and cotton

- 6 |** 26 x 25 cm
Woven by Leith MaGuire
\$550
- 7 |** 33 x 30 cm
Woven by Rebecca Moulton
NFS
- 8 |** 25 x 48 cm
Woven by Cheryl Thornton
NFS

9 - 10 | Nanyuma Napangati
Explorative Studies - *Untitled (detail from Kiwirrkurra Women's Painting)*, 2007
Wool and cotton

- 9 |** 20 x 28 cm
Woven by Cheryl Thornton
NFS
- 10 |** 25 x 37 cm
Woven by Milena Paplinska
NFS

- 11 | Maree Clarke & Mitch Mahoney**
Explorative Study - *Welcome to Country – now you see me: Seeing the Invisible*, 2024
Wool and cotton
36 x 35 cm
Woven by Chris Cochius
SOLD
- 12 | Judy Watson**
Explorative Study - *Midden*, 1996
Wool and cotton
81 x 12 cm
Woven by Irja West
SOLD
- 13 | Nyankulya Watson**
Explorative Study - *Ngayuku Ngura (This is my country)*, 2010
Wool and cotton
18 x 15 cm
Woven by ATW
NFS
- 14 | Judy Watson**
Explorative Study - *Midden*, 1996
Wool and cotton
41 x 26 cm
Woven by Owen Hammond
SOLD
- 15 | Daisy Andrews**
Explorative Study - *Lumpu Lumpu Country*, 2004
Wool and cotton
30 x 30 cm
Woven by Louise King
NFS
- 16 | Explorative Study – Embassy Collection**, 2009
Wool and cotton
38 x 15 cm
Woven by Milly Formby
\$400
- 17 | Naomi Hobson**
Explorative Study - *The Royal Harvest*, 2021
Wool and cotton
25 x 32 cm
Woven by Sue Batten
NFS

- 18 | Ruby Williamson**
Explorative Study - *Puli Murpu*, 2011
Wool and cotton
25 x 12 cm
Woven by Sue Batten
NFS
- 19 | Lee Darroch**
Explorative Study - *Lyrebird Songline*, 2021
Wool and cotton
21 x 21 cm
Woven by Jennifer Sharpe
NFS
- 20 | Anmanari Brown**
Explorative Study - *Kungkarrakalpa (The Seven Sisters)*, 2012
Wool and cotton
18 x 8 cm
Woven by Milena Paplinska
NFS
- 21 | Sheena Wilfred**
Explorative Study - *Bush Foods*, 2015
Wool and cotton
22 x 22 cm
Woven by Pamela Joyce
NFS
- 22 - 24 | Mandy Nicholson**
Explorative Studies - *Wurundjeri Biik, Yalinguth, Yulingbu, Yirramboi*, 2020
Wool and cotton
22 | 20 x 17 cm
Woven by David Pearce
\$400
23 | 20 x 15 cm
Woven by Cheryl Thornton
NFS
24 | 20 x 17 cm
Woven by David Pearce
NFS

Small Works and Studies



- 25 | **Mirka Mora**
Explorative Study - *Curlews in the Garden*, 1980

Wool, cotton and lurex
37 x 37 cm

Woven by Sara Lindsay

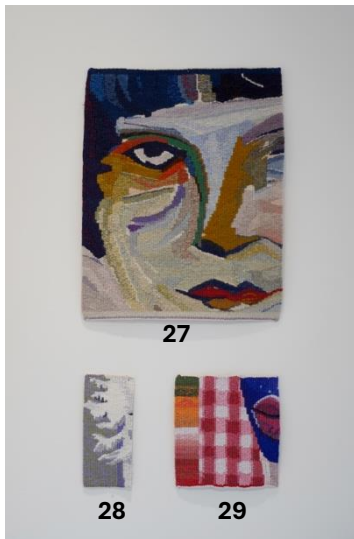
NFS

- 26 | **Mirka Mora**
Explorative Study - *Curlews in the Garden*, 1980

Wool, cotton and lurex
40 x 34 cm

Woven by Sara Lindsay

\$1,100



- 27 | **Polly Courtin**
Untitled, 1989

Wool and cotton
40 x 31 cm

Woven by Pamela Joyce

\$800

- 28 | **Eugenia Lim**
Explorative Study - *Future Fossils (Old Tjikko)*, 2021

Wool and cotton
18 x 18 cm

Woven by Tim Gresham

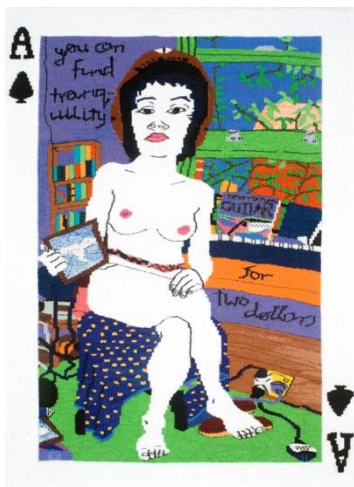
NFS

- 29 | **Atong Atem**
Explorative Study - *Self Portrait in July*, 2021

Wool and cotton
17 x 16 cm

Woven by Pamela Joyce

NFS



- 30 | **TextaQueen**
Ace of Spades, 2003

Wool and cotton
76 x 56 cm

Woven by Hilary Green

\$3,300 (framed)

30



31 | Ema Shin
 Explorative Study - *Hearts of Absent Women (Tree of Family)*, 2026

Wool, cotton, bamboo yarn, acrylic yarn,
 cotton pearls, glass beads and satin ribbon
 43 x 30 cm
 Woven by Saffron Gordon
NFS

32 | Irene Barberis
 Explorative Study – *Tapestry of Light*, 2012

Wool and cotton
 32 x 30 cm
 Woven by Emma Sulzer
\$550

33 | Sally Smart
 Explorative Study - *Eye Desire*, 2011

Wool and cotton
 24 x 22 cm
 Woven by Sue Batten
NFS

34 | Irene Barberis
Untitled, 2005

Wool and cotton
 16 x 21.5 cm
 Woven by Emma Sulzer
\$450

35 | Rae Ganim
 Explorative Study - *The Banksia Series*,
 1987

Wool and cotton
 27 x 13 cm
 Woven by Meryn Jones
\$350

36 | Jenny Kee
 Explorative Study - *Universal Oz*, 2017

Wool and cotton
 81 x 20 cm
 Woven by Pamela Joyce
NFS

37 | TextaQueen
 Explorative Study - *Queen of Hearts*, 2003

Wool and cotton
 24 x 11 cm
 Woven by Caroline Tully
\$500

38 | TextaQueen
 Explorative Study – *Ace of Spades*, 2003

Wool and cotton
 17 x 14 cm
 Woven by Hilary Green
NFS

39 - 41 | Emily Floyd

Explorative Studies - *The Declaration of the Rights of the Child (Aim and Abundance and Women of the West)*, 2018

Wool and cotton

39 | 20 x 19 cm
Woven by Pamela Joyce
\$500

41 | 20 x 19 cm
Woven by Pamela Joyce
\$500

40 | 21 x 20 cm
Woven by Chris Cochius
\$500



42 | Helen Maudsley
Explorative Study - *Untitled*, 1985

Wool and cotton

35 x 36 cm

Woven by Sara Lindsay

SOLD

43 | Sara Lindsay
Explorative Study - *Lights, light, lights*, 1984
Wool and cotton

36 x 36 cm

Woven by Sarah Lindsay

\$800



44 - 45 | Mary MacQueen
Explorative Studies - *The Pavilion Suite Tapestries*,
1984 - 1987

44 | Wool and cotton
40 x 48 cm
Woven by Chris Cochius
\$950

45 | Wool and cotton
35 x 46 cm
Woven by Chris Cochius
\$900



46 | Merrill Dumbrell
Explorative Study - *Clouds*, 1984

Wool and cotton

50 x 50 cm

Woven by Merrill Dumbrell

SOLD

Lesley Dumbrell Studies

Lesley Dumbrell is regarded as one of Australia's most respected artists in the field of geometric abstract painting. Her richly coloured and intensely lined paintings are essays in colour, geometry and optical perception. From 1979 to 1981 the Australian Tapestry Workshop commissioned a number of large adaptations of Dumbrell's work, including *Snakes and Ladders* for the National Australian Bank in 1979, and *Grevillea*, in 1981. Lesley was introduced to tapestry by her sister Merrill Dumbrell, a founding weaver at the ATW.



47 | Lesley Dumbrell
Explorative Study - *Rosella*, 1981

Wool and cotton
44 x 40 cm
Woven by Ian Young
NFS

48 | Lesley Dumbrell
Explorative Study - *Grevillea*, 1981

Wool and cotton
25 x 38 cm
Woven by Sonja Hansen
NFS

49 | Lesley Dumbrell
Explorative Study - *Fan Tan*, 1989

Wool and cotton
37 x 30 cm
Woven by Grazyna Bleja
\$750

50 | Lesley Dumbrell
Explorative Study - *Fan Tan*, 1989

Wool and cotton
27 x 30 cm
Woven by Barbara Mauro
\$650

Botanical Studies



- 51 | Marie Cook**
Explorative Study - *Pink Heath*, 1979
Wool and cotton
42 x 36 cm
Woven by ATW
\$800
- 52 | Rae Ganim**
Explorative Study - *Cornflowers*, 1988
Wool and cotton
26 x 36 cm
Woven by Irja West
\$600
- 53 | Margaret Stones**
Explorative Study - *Untitled II*, 2003
Wool and cotton
22 x 25 cm
Woven by Chris Cochius
\$450
- 54 | Margaret Stones**
Explorative Study - *Untitled II*, 2003
Wool and cotton
28 x 22 cm
Woven by Louise King
\$500

- 55 | Sue Batten**
Study for the *Untitled*, 1987
Wool and cotton
18 x 19 cm
Woven by Sue Batten
\$250
- 56 | Margaret Stones**
Explorative Study - *Untitled I*, 2003
Wool and cotton
29 x 26 cm
Woven by Irja West
SOLD
- 57 | Margaret Stones**
Explorative Study - *Untitled I*, 2003
Wool and cotton
29 x 37 cm
Woven by Louise King
\$550
- 58 | Faye Plamka**
Explorative Study - *Yarra Vally Wild Flowers*, 1988
Wool and cotton
22 x 26 cm
Woven by ATW
\$500