

ATW 2026 Artist in Residence Information Pack

International Residency



Kaimurai, 2025 ATW International Artist in Residence. Photos: ATW + Tom Hvala

In 2026 ATW will celebrate 50 years producing exceptional quality, handwoven tapestries in collaboration with contemporary artists. Our tapestries are commissioned globally for public and private collections.

ATW's annual Residency program offers artists working with textiles or employing textile techniques the chance to extend and innovate their practice. For over 20 years, Artists in Residence have immersed themselves in our vibrant studio – exchanging knowledge and skills with our

tapestry weavers and dye technicians. AIRS are encouraged to engage with local communities through the exhibition of their works, artist talks and workshops.

The residency may be used as an experimental or research period, or for the creation of a body of work. The International Residency is a four-week funded program from **13 July to 10 August 2026**; however, the artist is welcome to extend their residency up to eight weeks with their own funding.

INCLUSIONS

The International Residency is generously supported by the Tapestry Foundation of Australia through the Hancock Fellowship, and our accommodation partner, David Wallage. It includes:

- International return flights to Melbourne
- Four weeks accommodation in South Melbourne from **13 July to 9 August 2026**
- The possibility of broader Australian engagement through travel to one interstate destination for two nights
- A dedicated working space in the weaving studio
- Access to a range of looms and weaving equipment
- Up to \$100 worth of new ATW yarn; additional post-production yarn and warp may be available
- Up to seven hours of training with a weaver or dye technician, which can be used over several sessions
- Access to ATW's online tapestry weaving course
- A ten-week solo exhibition from **23 July to 3 October 2026**
- An invitation to participate in a curated group exhibition in the following year

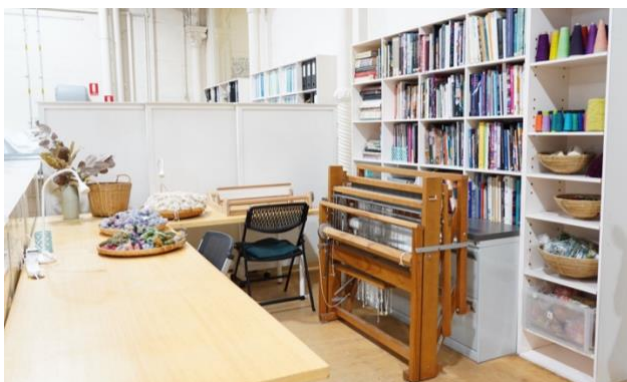
ELIGIBILITY

The International Residency is open to international artists living and working outside Australia. Artists working primarily in textiles or employing textile techniques in conjunction with other media are encouraged to apply.

THE STUDIO

The Artist Studio space is located within the Production Floor. This is an open space visible to visiting public during opening hours from Thursday to Saturday 10am to 5pm. The studio has access to a range of looms and weaving equipment, including:

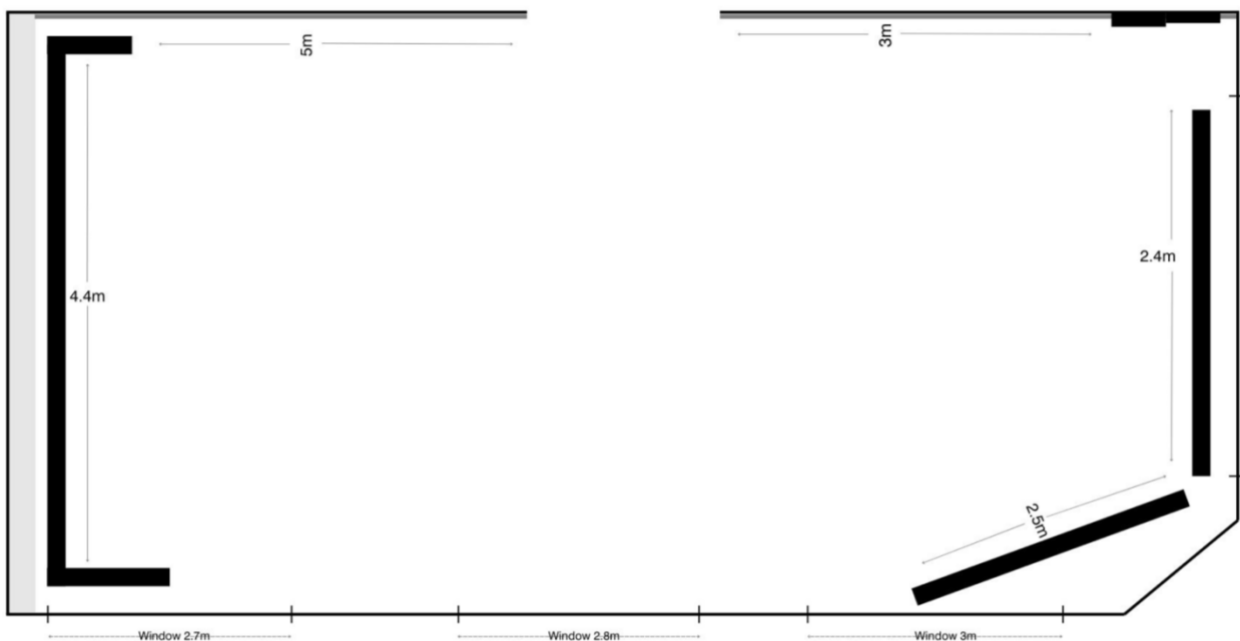
- 4 shaft, 6 treadle Leclerc floor loom
- 50cm wide Ashford rigid heddle loom
- 60cm, 2 shaft table loom for cloth and tapestry weaving
- Large Shannock tapestry looms
- Sewing machine
- Tapestry weaving tools and equipment



THE EXHIBITION

The International Residency includes the opportunity to exhibit and sell work in our gallery (see floorplan below). The Hancock Fellowship includes a contribution towards delivery and return freight of works to the exhibition. The gallery has 17m hanging space.

The gallery is equipped for a wide range of installation requirements. Plinths are available, and ceiling suspension is possible. The exhibition includes installation assistance, curatorial advice, invigilation, signage, sales, media/marketing, and an opening event.



Installation view of 'ON-GOING' in the ATW International Artists in Residence. Gallery.
Exhibition by Studio Brieditis & Evans, the 2023 International Artists in Residence. Photo:
Marie-Luise Skibbe

APPLY

To apply, please complete the online application form. We recommend drafting your application in a Word document with the following information, then copying and pasting text into the form when you are ready to submit.

Required Information:

- Contact information (name, address, email address, website, Instagram handle)
- Have you previously undertaken residencies, if yes: where, what was the duration, how did it impact your practice? (200 words)
- Brief statement about your practice (200 words)
- Brief description outlining how you propose to use your time in the residency – do you have a project in mind, are you looking to deepen your skills through connecting with our dye lab or weavers? (200 words)
- List any public programs you have delivered in the past (e.g workshops, demonstrations or talks) or ideas for any public programs you would be interested in delivering during your residency? (150 words)
- 1 page artist CV (PDF only accepted)
- Up to 10 support images (JPEG, max 1MB) – these can be of previous work or proposed work for the residency; please send us professional high-quality images of your strongest work

Applications close on **Wednesday 10 September, 1pm AEST**.

To ensure you meet the submission deadline please ensure you are aware of AEST time-zone differences; late applications will not be accepted. Applicants will be notified of outcomes by 20 October 2025.



Victoria Manganiello, 2020 International Artists in Residence. Photo: ATW

APPLY HERE

ASSESSMENT CRITERIA

Applications will be assessed using the following criteria:

- a. **Artistic Merit:** Strength of the artist's practice and potential for artistic growth and professional development during the residency
- b. **Viability** of the proposed work to be undertaken and the artist's capacity to achieve these outcomes
- c. **Engagement:** The artist creates opportunities to introduce ATW to new artistic ideas, audiences and education or public program outcomes

ACCESS & INCLUSION

We welcome and support applications from artists who identify as First Peoples, those from culturally and linguistically diverse backgrounds, and/or people with a disability. ATW is committed to creating a fair, equitable and inclusive environment for artists. We value diversity in the artistic community and support the rights of all people regardless of age, gender, ability or background.

If you have specific access requirements to complete the application or Residency, please contact us to discuss how we can support you. Consideration may be made for alternative methods of application, including video submission.

MORE QUESTIONS?

We are happy to answer any questions regarding the Residency and our program in general. Please contact:

Jo Crase (she/her)
Program Coordinator
publicprograms@austapestry.com.au

FAQ's

Do I need to make tapestry during this residency?

This is not a requirement, however if you want to learn tapestry weaving you will be supported to do so. Please keep in mind that a substantial time is required to comprehensively learn tapestry weaving so you would need to commit adequate time to this. We suggest that more than three weeks would be required for an artist to develop a full appreciation of tapestry.

I am a temporary resident in Australia, can I still apply for the International Artist Residency?

No. The Hancock Fellowship is intended for an artist who lives and works outside Australia. Please consider the Open Call Residencies.

If I have never done tapestry before, will there be an opportunity to learn? Yes, the Residency includes training from our weavers to get you started and you can continue to learn with our online tutorials, making use of our tapestry materials and equipment. Artists need to commit significant time to learn how to weave.

Can I work with ATW's specialist Dye Lab during my residency, or am I limited to weaving support?

Yes, AIRs can choose to apply their training with either a specialist weaver or with the dye lab. The training can be used over several sessions.

If I want to use materials from ATW will I have to pay? You can use \$100 of new ATW wool, and may be able to access post-production waste such as bobbin ends if available during your residency. Additional materials are available to purchase as required.

If I am unsuccessful in my application for the Hancock Fellow, can I be considered for the Open Call Residency? Yes, but please keep in mind that the Open Call Residencies need to be self-funded. ATW can provide limited assistance to support you to apply for additional funding.

If successful, how and when will the funds be paid? The funds will be paid through individual consultation with the artist when required for booking travel and accommodation.

What if I don't want to or am unable to do an artist talk or workshop? If you are unable to deliver a talk we will work with you to develop a public outcome that is more suited to you.